



Community Exhibition Spaces

Community Exhibition Spaces in the City of Greater Dandenong offer opportunities for artists and arts organisations to showcase their artwork, and for the community to engage in art in public spaces. They contribute to the communities' arts and cultural experiences and provide a unique platform for artists to contribute to the creativity and dialogue of the city.

Harmony Square Exhibition Windows

[Harmony Square Exhibition Windows | Greater Dandenong Council](#)

Located in Dandenong's Harmony Square, two purpose-built gallery exhibition windows offer artists an opportunity to showcase contemporary interdisciplinary projects.

The exhibition windows animate the main entrance to the Dandenong Library and Civic Centre building, as well as Harmony Square, creating additional light, colour and contemplation for users of these spaces.

Suitable for, but not limited to; 2D artwork, photography, small space installations, sculpture

Features:

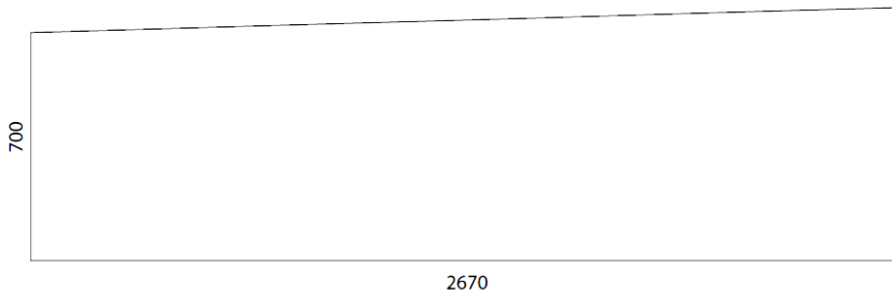
- Two windows (see dimensions in below diagram)
- Power outlet in both windows
- Picture railings
- Ceiling racks suitable for suspending
- Lighting track and 2 spotlights

Restrictions:

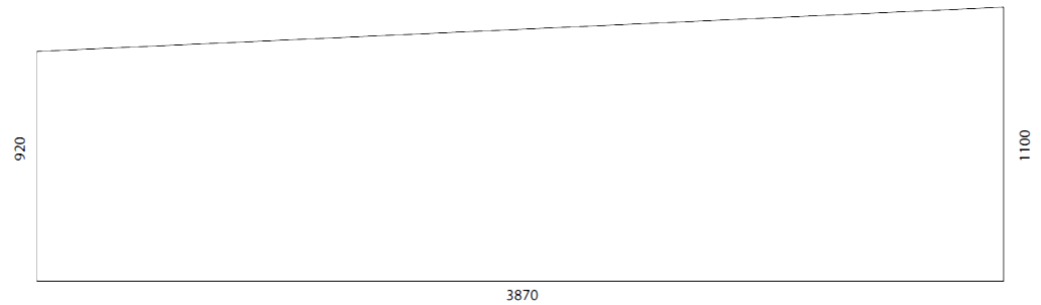
- 3D work requiring plinths
- No holes (drilling, nails etc)
- No adhesives (domestic adhesives may be approved)
- North facing; therefore, they are exposed to heat and sunlight. Delicate works which may be affected or damaged by these conditions are not suitable for this exhibition space.



Harmony Square Exhibition Windows - East
(w) 2670mm x (h) 2280mm x (d) 700 – 780mm



Harmony Square Exhibition Windows – West
(w) 3870mm x (h) 2280mm x (d) 920 – 1100mm



Garnar Lane Light Boxes

[Garnar Lane Light Boxes | Greater Dandenong Council](#)

Located on the south side of the Dandenong Civic Centre, seven purpose-built gallery light boxes offer artists an opportunity to produce contemporary interdisciplinary projects including 2D and 3D installations that contribute to a visitor's arts and cultural experience of central Dandenong.

The light boxes animate pedestrian routes creating additional light, colour and contemplation.

Suitable for but not limited to 2D artwork, photography, small space installations, sculpture

Features:

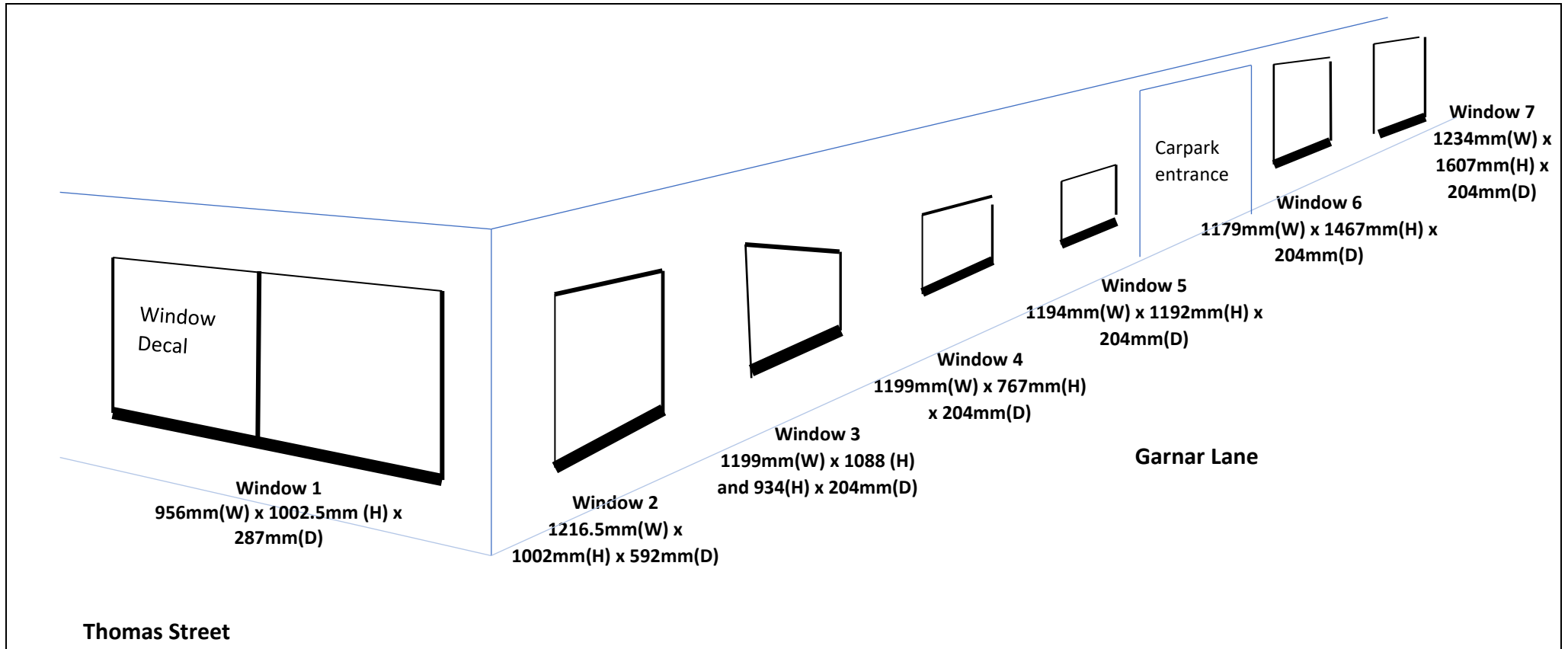
- 7 light boxes (fully lined interior with matt black contact. Exterior framed with stainless steel)
- Ceiling racks suitable for suspending
- LED strip lighting around the interior of the glass door
- Assorted plinths (dark walnut-stained wooden blocks of varying width and length)

Restrictions:

- No holes (drilling, nails etc)
- No adhesives (domestic adhesives may be approved)
- No available power supply (battery operated light installations may be suitable. Additional batteries must be supplied)



View of windows 1, 2 & 3, corner Thomas Street and Garnar Lane



Mitchell Hall – Springvale Community Hub

[Springvale Community Hub Exhibition Space | Greater Dandenong Council](#)

Springvale Community Hub provides display panels inside Mitchell Hall as a prominent community exhibition space for local artists to display original artwork and to contribute to visitors' experience at the hub.

Suitable for but not limited to; 2D artwork, photography, small space suspended installations

Features:

- 9 panels (600mm w x 2100mm h)
- Picture hanging railings
- Display panels are protected by black, retractable bollard straps.
- Onsite security during opening hours

Restrictions:

- 3D work requiring plinths
- No holes (drilling, nails etc)
- No adhesives (domestic adhesives may be approved)
- No available power supply (battery operated light installations may be suitable. Additional batteries must be supplied)



DRUM THEATRE FOYER

[Venue Hire | Drum \(greaterdandenong.vic.gov.au\)](https://greaterdandenong.vic.gov.au/Venue-Hire/Drum)

Drum Theatre is a state of the art performing arts venue in the heart of Dandenong with striking architectural features. It is also a vibrant arts and cultural hub. The unique and contemporary foyer space is ideal for exhibitions, with its abundant natural light.

Suitable for but not limited to 2D artwork, photography, shallow installations.

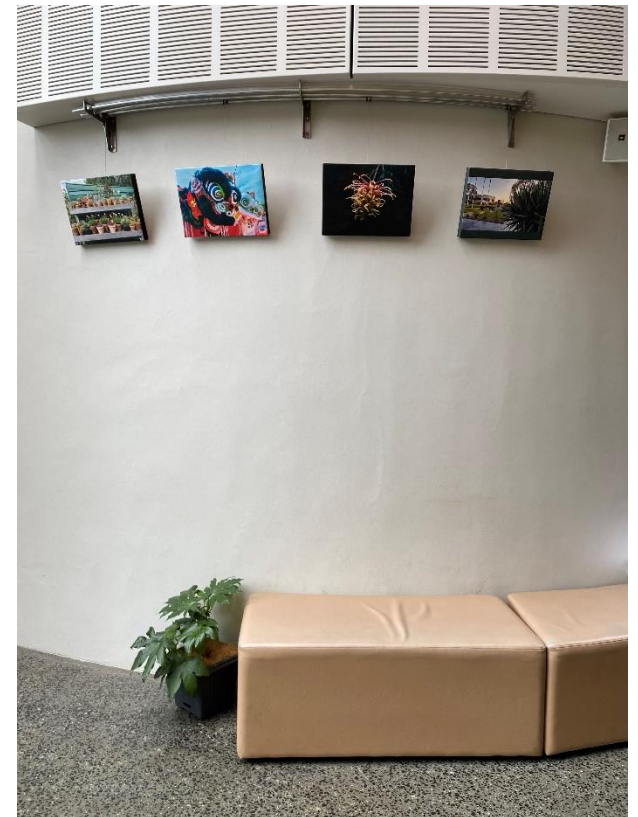
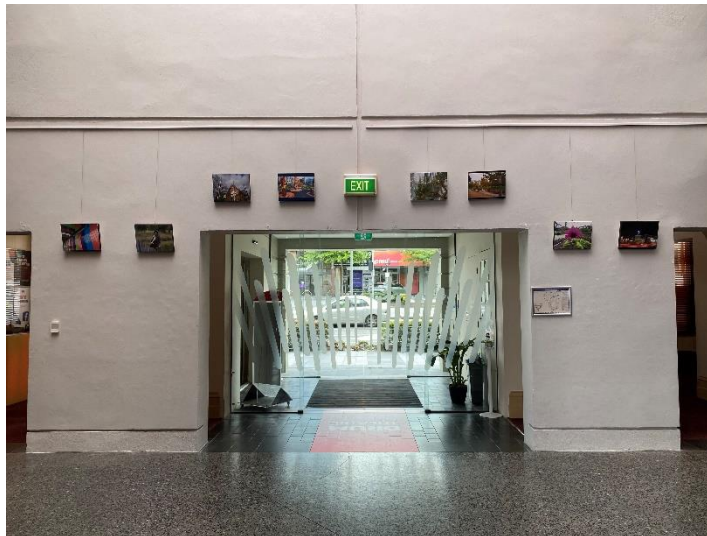
Features:

Multiple walls of varying dimensions

- Picture hanging railings
- Natural and artificial lighting

Restrictions:

- No holes (drilling, nails etc)
- No adhesives (domestic adhesives may be approved)
- No available power supply (battery operated light installations may be suitable. Additional batteries must be supplied)



PUDDING LANTERNS

A new public art installation depicting 3 large community lanterns helps illuminate Copas Park, Noble Park. Their hand-crafted legs bring unique personalities while their bodies are open and transparent. These curious structures display an ever-changing gallery of small artworks and were made to give a sense of safety and belonging, and to showcase the creativity of the community for the community.

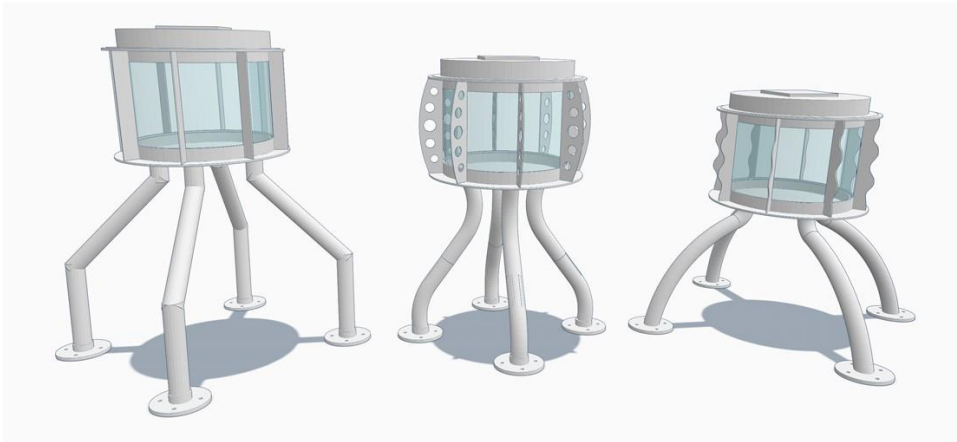
Suitable for but not limited to; 2D artwork, photography, small space 3D installations (2D images preferably printed on translucent or transparent paper).

Features:

- 3 x cylindrical display boxes of varying sizes
- Internally lit

Restrictions:

- No holes (drilling, nails etc)
- No adhesives (domestic adhesives may be approved)
- No available power supply (battery operated light installations may be suitable. Additional batteries must be supplied)



BUCKLEY'S LANE LIGHT BOXES

Buckley's Lane Light boxes are new public art display spaces which bring art and illumination to Noble Park. The 7 back-lit light boxes link commuters from residential zones through Copas Park to the shopping village and train station. The light boxes help connect the journey with other public art in the area such as Copas Park's Pudding Lanterns, Buckley's Lane Mural and Muderra Way Mural.

Suitable for 2D artwork or photography which can be printed/digitised on translucent or transparent paper.

Features:

- 7 x A3 boxes fixed to a wall (4 x portrait and 2 x landscape orientation)
- Lockable doors for security
- LED back lighting
- Image format: Jpeg/Tif/pdf/png, CMYK and 300dpi

Restrictions:

- No holes (drilling, nails etc)
- Not suitable for 3D artwork
- No adhesives (domestic adhesives may be approved)
- No available power supply
- Artwork must be printed by council's contractor

