

GREATER DANDENONG

Municipal Parking

STRATEGY

INFORMATION SHEET

Managing Parking in Narrow Streets

The Greater Dandenong Municipal Parking Strategy was adopted in 2017 following consultation with the community. The Strategy aims to guide Council's management of parking to meet the varying needs of the city.

An area of concern to a number of residents is parking on narrow streets.

This Information Sheet is about parking in narrow streets less than 6.6 metres wide. It covers Council's management and enforcement of parking in these areas.

Council manages traffic and parking in accordance with relevant legislation and the Road Safety Road Rules 2017.

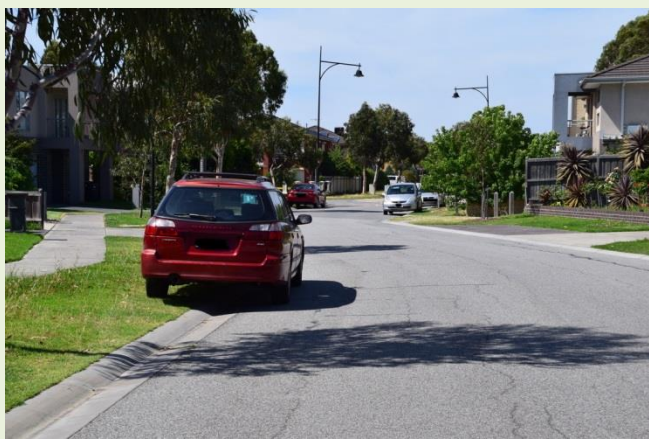
Roads narrower than 6.6 metres may provide challenges for the provision of adequate parking. Nonetheless there are ways to manage parking in these streets so that opportunities are maximised while maintaining road safety for traffic.

A full version of the Municipal Parking Strategy and information sheets are available on Council's website, and at Council customer service centres.



Parking on the nature strip

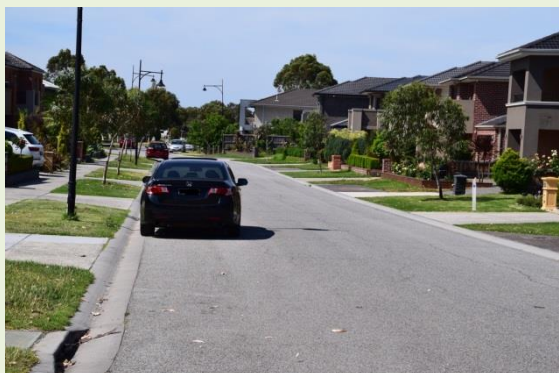
Parking on nature strips or footpaths is not permitted under the Victorian Road Rules. Vehicles parked on nature strips or footpaths can damage public infrastructure above and below the ground leading to increased maintenance costs. They may also prevent emergency services from accessing key infrastructure such as water, sewerage, gas, telephone and drainage. Vehicles parked on nature strips can pose increased safety risks for pedestrians as they are less visible to motorists.



Parking on the road

Residents and visitors can park on the road carriageway as long as in so doing, they allow **three metres** clear distance to an adjacent vehicle or obstacle. This allows access for emergency and other vehicles.

On narrow roads, this can allow legal parking of a car on one side of the road carriageway in addition to any indented parking spaces.



“Two Wheels Up” Parking

Council has adopted a more flexible approach to allow parking on nature strips in narrower residential streets. This may occur where traffic volumes and average speeds are low and sufficient space exists on the nature strip.

In some narrow streets which **are less than 6.6 metres wide**, Council may allow “two wheels up” parking on the nature strip, provided vehicles do not cause a road safety hazard and other conditions are satisfied.

Council may choose to construct a concrete strip behind the kerb on designated streets where demand for this type of parking is high.

Parking infringement notices will not be issued by Council on these streets for “two wheels up” parking.

In narrow roads without a concrete strip, Council’s enforcement officers will continue to enforce the prohibition to park on the nature strip unless otherwise signed.

Safety and cars parked in the street

There is often a perception that cars parked in the street are a hazard to motorists. Research has shown that cars parking on the street often make streets safer. Parked cars narrow the road influencing traffic to slow down. Slower speeds lead to a reduction in both the frequency and severity of accidents.

Narrower streets can allow more space for planting vegetation and providing better and safer streetscape environments in residential neighbourhoods, encouraging walking and cycling.

Parking in garages and driveways in private properties

Council strongly encourages residents to use their garages and driveways to park their vehicles. This private off-street parking is guaranteed and helps ease the demand for parking on the street.



Indented car parking

Indented car parking spaces provide an alternative parking space in addition to the road carriageway and can improve the space available for cars driving on the road.

Indented car parking spaces need to be properly constructed with hard stand concrete paving and accommodate drainage and other services.

Residents may apply to construct indented car parking on the nature strip outside their own property, if feasible, at their expense at locations where this increases parking supply. Anyone, including neighbours, may park in the constructed indented parking spaces.

The cost to construct an indented car space can be \$5,000 to \$10,000 depending on the specific site.

If an application for an indented car parking space is received, Council will consult with adjoining residents to consider their views on the installation.

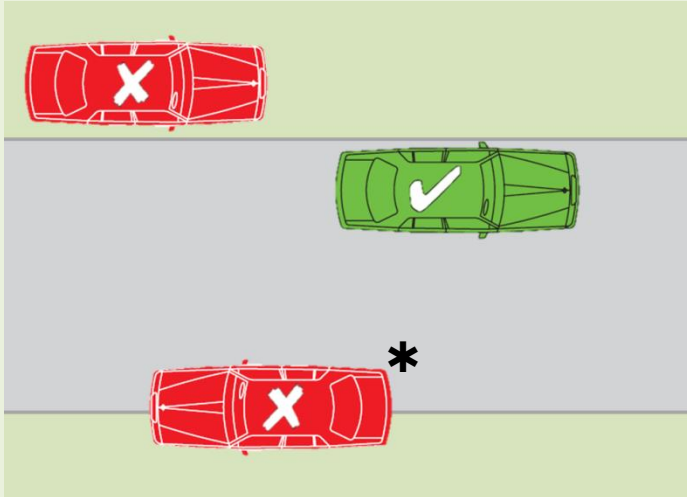


Contacting Council

You can contact Council to report illegal parking, request changes to parking restrictions or ask for advice regarding any of the content in this information sheet.

- Phone: (03) 8571 1000
- e-mail: council@cgd.vic.gov.au
- online form: <http://www.greaterdandenong.com/request>
- visiting one of our customer service centres in Dandenong, Springvale, Noble Park or Parkmore Shopping Centre

Useful Road Rules



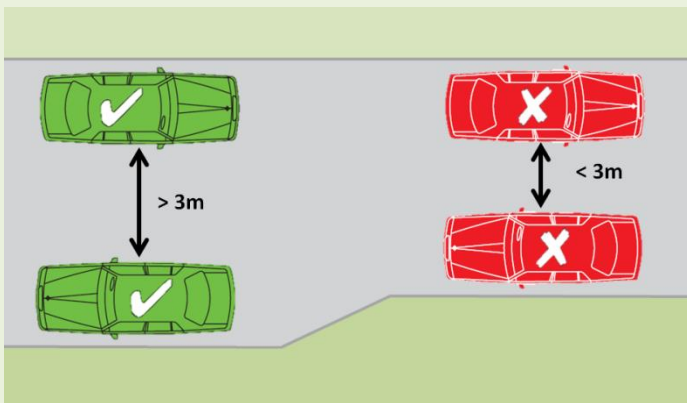
Road Rule 197 (1)

Parking on the Nature Strip is illegal.

A driver is not allowed to park over a bicycle path, footpath, shared path dividing strip, or a nature strip.

While it is still illegal, on some narrow streets, Council does not enforce two wheels up parking (shown with a *).

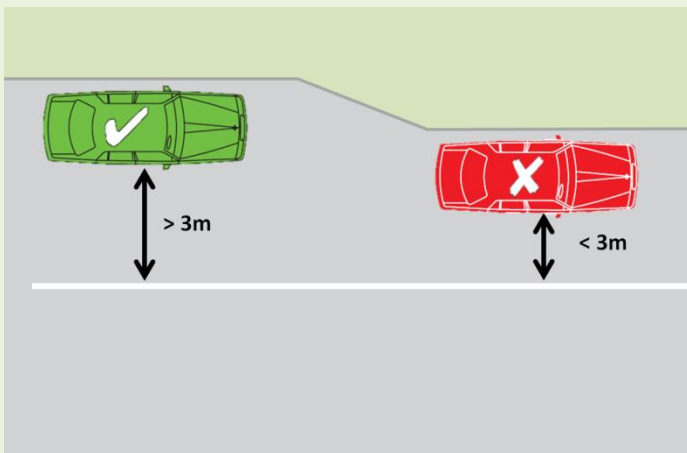
See "Two Wheels Up Parking".



Road Rule 208 (7)

Drivers must always position their vehicle when parking so there is at least 3m of the road alongside the vehicle that is clear for other vehicles to pass.

This space is required for emergency vehicles to pass through.



Road Rule 208 (6)

Where there is a continuous dividing line (solid centre line) on the road, drivers must not park within 3m of the line. This space is required for emergency vehicles to pass through.

This rule does not apply if there are parking signs permitting parking, or if the line is broken.

Find out more about the road rules, parking restrictions and parking infringements on Councils website at:

<http://www.greaterdandenong.com/document/63/parking-fees-laws-and-restrictions>

Phone **8571 1000**
Fax **8571 5196**
@ council@cgd.vic.gov.au



TTY: 133 677
Speak and listen: 1300 555 727
Internet: www.iprelay.com.au



TIS: 13 14 50

Find us online  www.greaterdandenong.com



www.facebook.com/greaterdandenong
www.twitter.com/greaterdandy
www.youtube.com/citygreaterdandenong