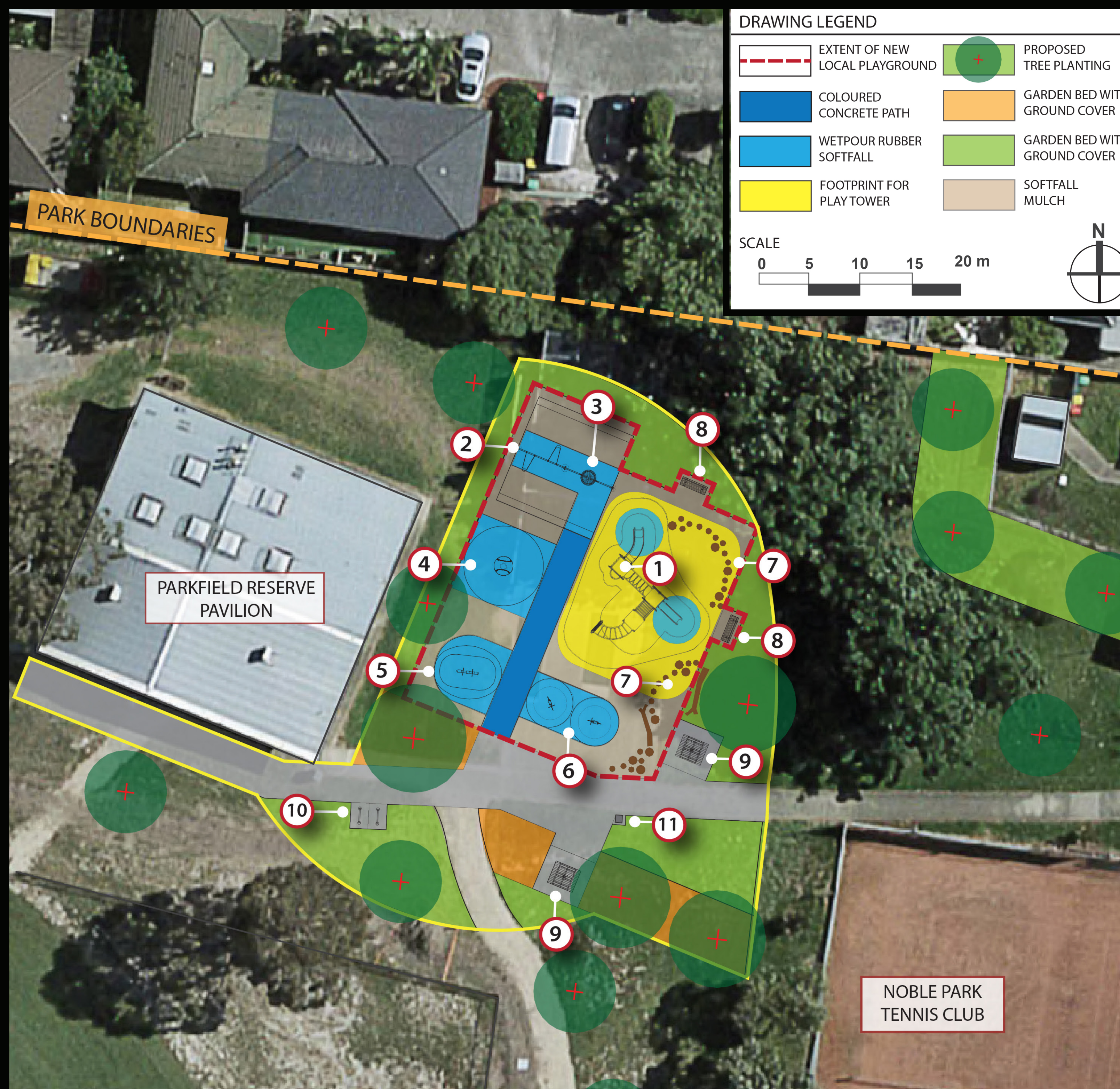


# COMMUNITY CONSULTATION PROPOSED NEW LOCAL PLAYGROUND



## 25A DUNBLANE ROAD, NOBLE PARK

### PARKFIELD RESERVE



#### Local Playground Upgrade Concept Plan



#### Local Playground Location Map

### Proposal

Greater Dandenong City Council is planning to replace the old playground with a new local playground.

The new playground will be relocated to the north of the park to replace the existing cricket net area, which is being relocated to a different location in the park.

The playground in Parkfield Reserve will be designed to encourage active, challenging, imaginative and social play for both younger and older children.

The project will include new play equipment, tree planting, landscaping and park furniture.

Council is seeking the community's feedback on the concept plan and the playground equipment ideas (see images) as well as other suggestions you may have. Your ideas will help shape the design of the playground.

### Ideas and opportunities for the local playground

- 1 Play activity tower with elements such as:
  - climbing rope nets, monkey bars or climbing walls
  - flexible gangways and ladders
  - platform decks at different heights
  - cubby house
  - one large and one small slide
  - integrated play panels such as a shop front, driving wheel etc.
  - interactive play elements - noughts and crosses, sliding elements
- 2 Double swing (includes toddler swing)
- 3 Basket swing
- 4 Four person rotating spinner
- 5 Tandem bull rider or seesaw
- 6 Two rockers
- 7 Steppers and logs (nature play elements)
- 8 New seats
- 9 New picnic tables
- 10 New bike racks
- 11 Relocated new rubbish bin

### Legend

- |  |   |
|--|---|
| A New local playground location              | G Noble Park tennis club                          |
| B Existing local playground to be removed    | H Existing hit up wall                            |
| C Existing public amenity block              | I Future possible relocated cricket practice nets |
| D Recently completed Dunblane Road car parks | J Cricket oval and soccer fields                  |
| E Parkville Reserve pavilion                 | K Existing picnic shelter                         |
| F Ellendale Road kindergarten                |   |

## HAVE YOUR SAY

To view the concept plan online and to have your say via the online survey, visit Council's website [greaterdandenong.vic.gov.au](https://greaterdandenong.vic.gov.au) under the 'Have your say' Section.

#### Contact Council

Phone: 8571 1000

Email: [council@cgd.vic.gov.au](mailto:council@cgd.vic.gov.au)

Post to:  
Ms Jane Brodie  
Coordinator Strategic, Design and Sustainability  
Planning and Design  
PO Box 200, Dandenong VIC 3175

Submissions close Monday 20 December 2021