

COMMUNITY CONSULTATION NEIGHBOURHOOD PLAYGROUND



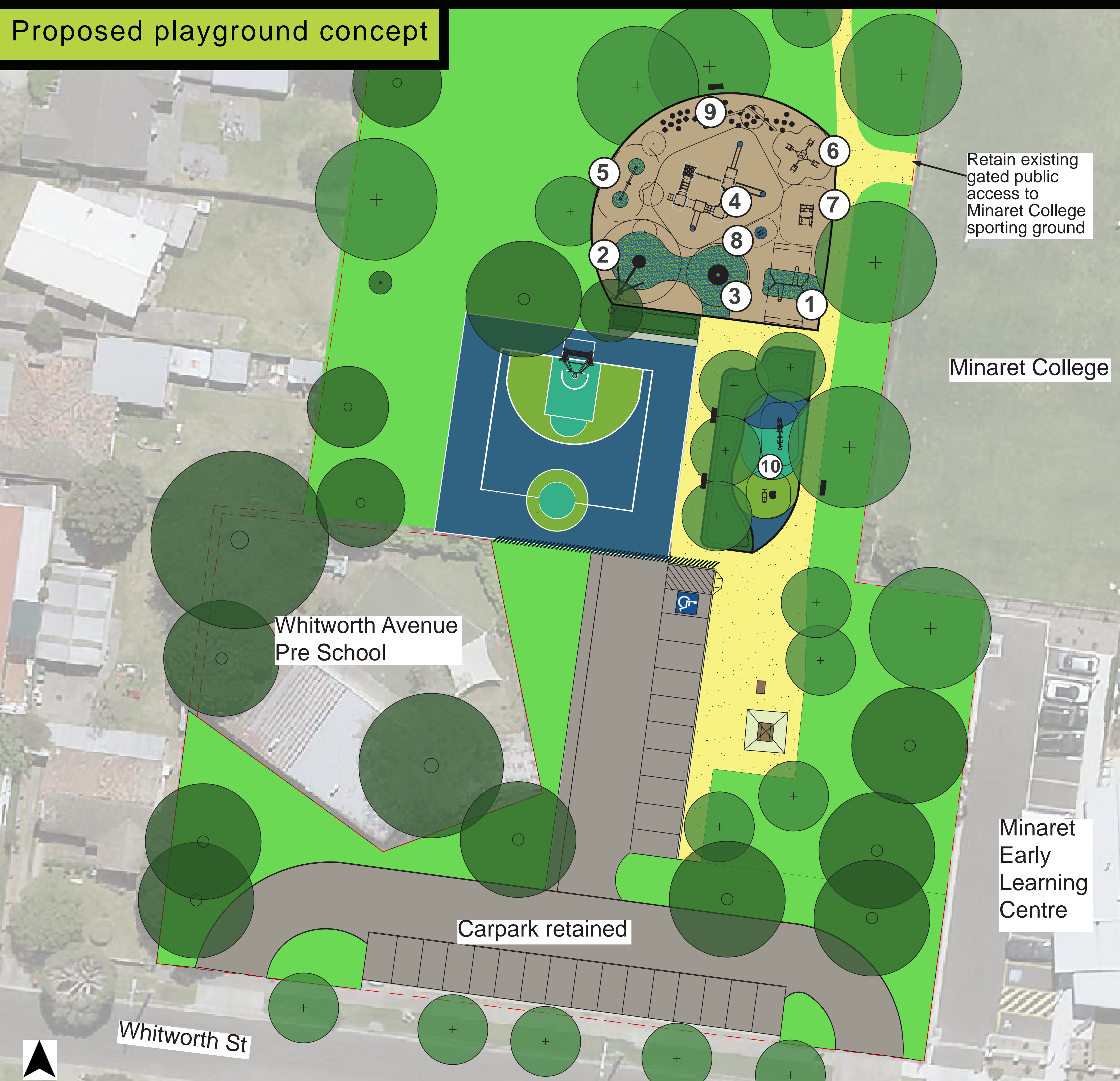
GLENDALE RESERVE

75A WHITWORTH AVENUE, SPRINGVALE

Existing playground



Proposed playground concept



Proposal

Greater Dandenong City Council is planning to upgrade the Glendale Reserve playground and surrounding landscape.

As part of Stage 1 works, Council has recently built a half basketball court with futsal goals to replace the recently removed scout hall.

The Stage 2 works will include a new playground with a diverse range of playground equipment.

Council is now seeking feedback on the draft playground ideas as well as other suggestions you may have.

Your ideas will help shape the design of this new playground.

Ideas and opportunities for the proposed playground

- ① Double bay swing (one flat seat and one toddler seat)
- ② 360 degree basket swing
- ③ Spinner
- ④ Play activity tower with elements such as:
 - monkey bars, fireman's pole
 - climbing walls and steps
 - tunnel
 - platform decks at different heights
 - roof covering
 - small and large slide - wide/ enclosed slide
 - integrated play panels such as a shop front and driving wheel etc.
 - short length overhead track ride
- ⑤ Pendulum swing
- ⑥ Four person see-saw
- ⑦ Group spring rocker
- ⑧ Single spring rocker
- ⑨ Nature play
- ⑩ There is also an opportunity for a future fitness zone with garden bed planting and seating

HAVE YOUR SAY

To view the concept plan online and to have your say via the online survey, visit Council's website greaterdandenong.vic.gov.au under the 'Have your say' Section.

Contact Council

Phone: 8571 1000

Email: council@cgd.vic.gov.au

Post to:
Ms Jane Brodie
Coordinator Open Space Planning and Sustainability
Strategic and Environmental Planning
PO Box 200, Dandenong VIC 3175

Submissions close Friday 16 September 2022

Examples of playground ideas

